

SCOTTISH HOSPITALS INQUIRY

**Hearing Commencing
20 September 2021**

**Bundle 2 - Material Illustrating Layout of
Queen Elizabeth University Hospital and
Royal Hospital for Children, Glasgow**

This document may contain Protected Material within the terms of [Restriction Order 1](#) made by the Chair of the Scottish Hospitals Inquiry and dated 26 August 2021. Anyone in receipt of this document should familiarise themselves with the terms of that Restriction Order as regards the use that may be made of this material.

Table of Contents

Campus masterplan 2015	Page 5
Overview of layout of Queen Elizabeth University Hospital (“QUEH”) and Royal Hospital for Children (“RHC”) as at January 2015	Page 6
Photo of QUEH/RHC campus	Page 7
Plan showing ground floor adjacency (RHC)	Page 8
Plan of RHC ground floor showing photo locations	Page 9
Photos of RHC ground floor showing internal and external views	Page 10
Photos of RHC ground floor showing clinics, Atrium and A&E entrance	Page 11
Photos of RHC ground floor showing clinical decisions unit	Page 12
Plan showing first floor adjacency (RHC)	Page 13
Plan of RHC first floor showing wards 1a, 1b, 1c and link to neonatal unit	Page 14
Plan of RHC first floor Paediatric Intensive Care Unit (“PICU”)	Page 15
Plan of RHC first floor showing photo locations	Page 16
Photos of RHC first floor showing PICU corridor and ward 1 rooms	Page 17

Plan showing second floor adjacency (QEUH and RHC)	Page 18
Plan of RHC second floor showing wards 2a, 2b and 2c	Page 19
Plan of RHC ward 2a showing room numbers	Page 20
Plan of RHC ward 2c showing room numbers	Page 21
Plan of RHC ward 2b	Page 22
Plan of RHC second floor showing photo locations	Page 23
Photos of RHC second floor showing Teenage Cancer Trust, ward 2b corridor and isolation rooms	Page 24
Photos of RHC second floor showing wards 2a and 2b rooms and corridors	Page 25
Plan showing third floor adjacency (RHC)	Page 26
Plan of third floor RHC showing wards 3a, 3b and 3c	Page 27
Plan of third floor RHC showing photo locations	Page 28
Photos of RHC third floor showing rooms, common areas and medicinema	Page 29
Plan showing fourth floor adjacency (RHC)	Page 30
Plan of fourth floor of RHC showing Department of Child and Family Psychiatry	Page 31
Photos of fourth floor roof garden	Page 32
Image of QEUH	Page 33
Plan showing ground floor adjacency (QEUH)	Page 34
Plan of ground floor QEUH showing photo locations	Page 35
Photos of QEUH ground floor showing entrance area, atrium and lifts	Page 36

Plan showing second floor adjacency (QEUH)	Page 37
Plan showing third floor adjacency (QEUH)	Page 38
Plan showing fourth floor adjacency (QEUH)	Page 39
Plan showing sixth floor adjacency (QEUH and RHC)	Page 40
Plan of QEUH ward 6a	Page 41
Photos of QEUH adult wards and rooms	Page 42
Photos of QEUH adult ensuite bedroom and corridors	Page 43
Plan showing lift locations in QEUH and RHC	Page 44
Photo showing link between RHC and Maternity building	Page 45

SGH CAMPUS MASTERPLAN 2015



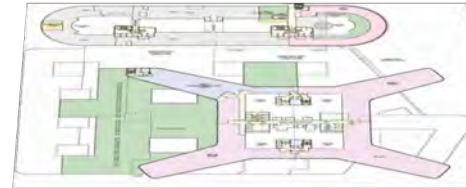
LAYOUT OF HOSPITALS (As at Jan 2015)

Adult Hospital

5th – 11th Floors:
Generic Wards



4th Floor:
Renal Wards,
Haemato-oncology



3rd Floor:
Bed Management,
Plant Rooms



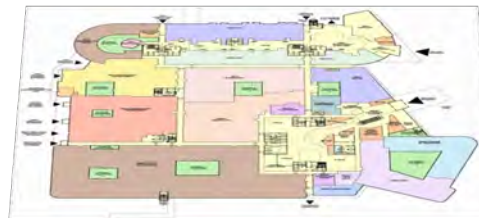
2nd Floor:
Theatres, Dermatology,
Renal Dialysis



1st Floor:
Critical Care, Stroke Ward,
MDU, OPD, Inpatient
Imaging, Restaurant



Ground Floor:
AAU, ED, Discharge Lounge,
Imaging, OPD, Retail



Children's Hospital

4th Floor:
DCFP

3rd Floor:
Inpatient Wards, Bed/Cot
Store, Health Records

2nd Floor:
Schiehallion, Aseptic Unit,
Acute Receiving, H@N,
Medical Day Unit

1st Floor:
Theatres, Interventional
Imaging, 23 Hour Ward, CCU,
PICU, Special Feeds & link to
NICU

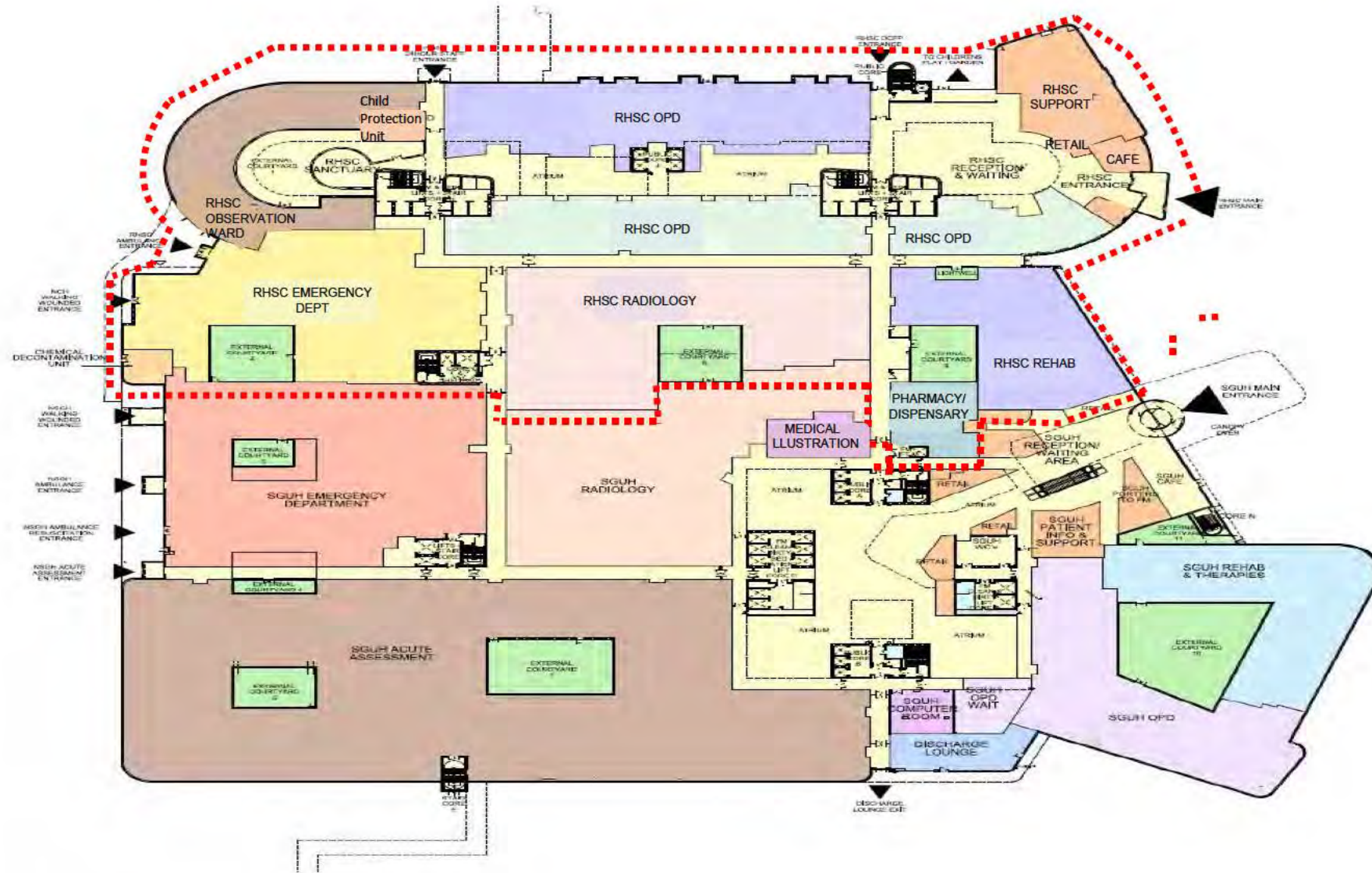
Ground Floor:
ED, Observation Ward,
Imaging, OPD

ROYAL HOSPITAL FOR CHILDREN GLASGOW



Jan 2015

GROUND FLOOR ADJACENCY PLAN



GROUND FLOOR



Numbers refer to photos shown on the following 3 slides



1
Main Entrance – NCH
(26 Aug 15)



2
Reception Desk – Main Entrance NCH
(26 Aug 15)



Out-patient Main Reception Desk –
Main Entrance NCH (26 Aug 15)



Out-patient Main Reception
Desk – looking towards side and
front entrances (26 Aug 15)



Seating area at side entrance
(NCH 26 Aug 15)



3
Side Entrance (to play area) – NCH (26 Aug 15)



External ground floor play area at side entrance to NCH (circa summer 15)





RHC Atrium leads to Sanctuary
(27 May 14)



Out-patient clinic waiting area – NCH (Clinic generic reception desks are positioned on either side and are green in colour) (26 Aug 15)



RHC & QEUH A&E Shared Frontage (26 Aug 15)



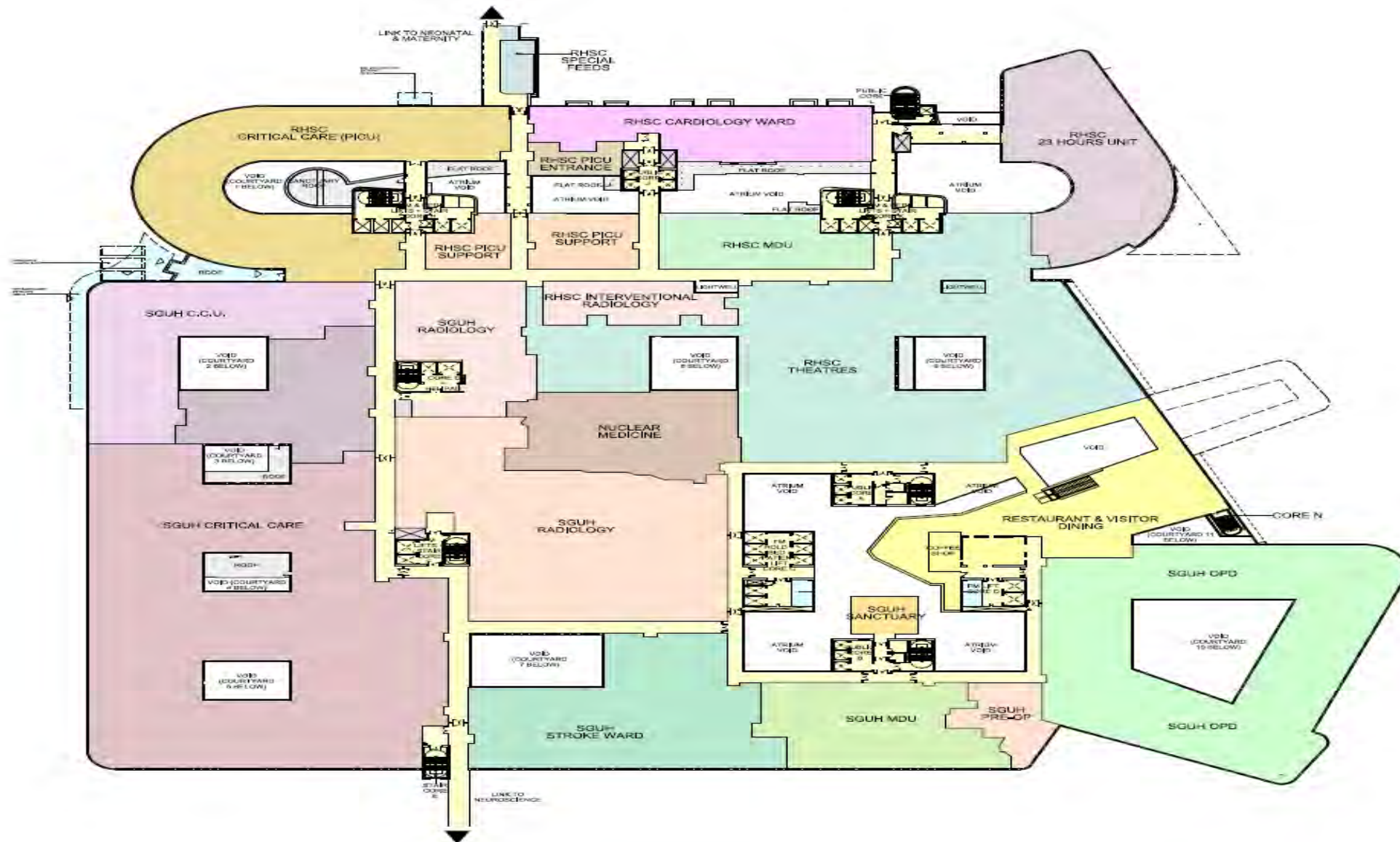
RHC A&E Access (July 2015)

7

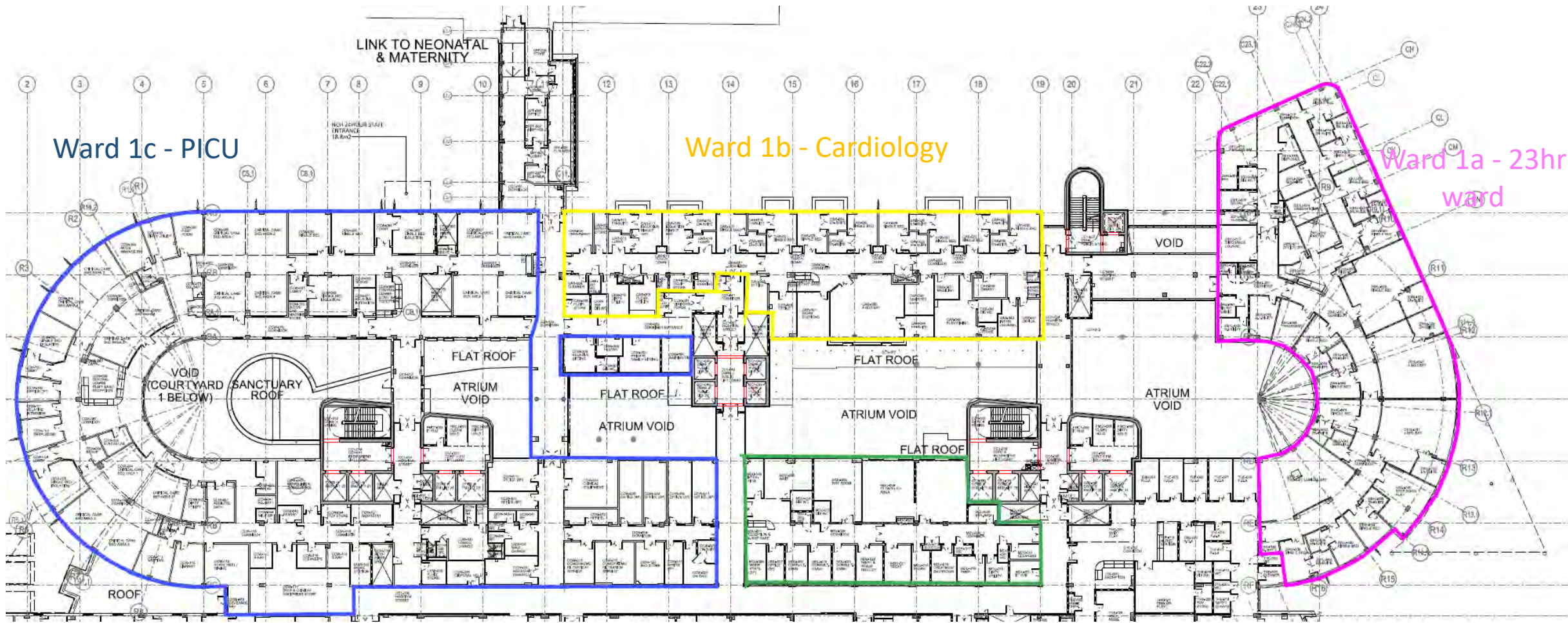


CDU - Reception/Enquiry Desk and waiting area overlooking internal courtyard

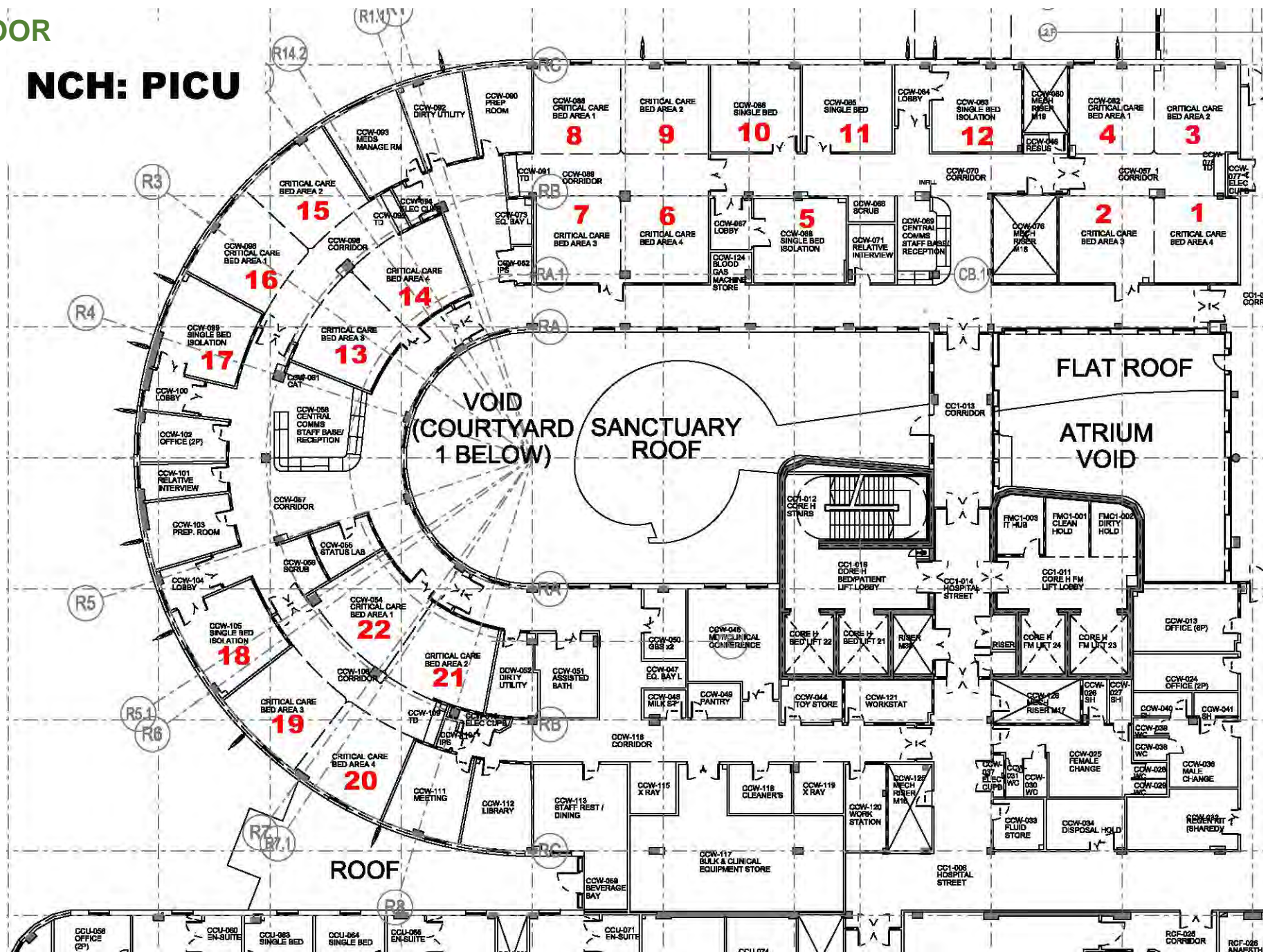
FIRST FLOOR ADJACENCY PLAN

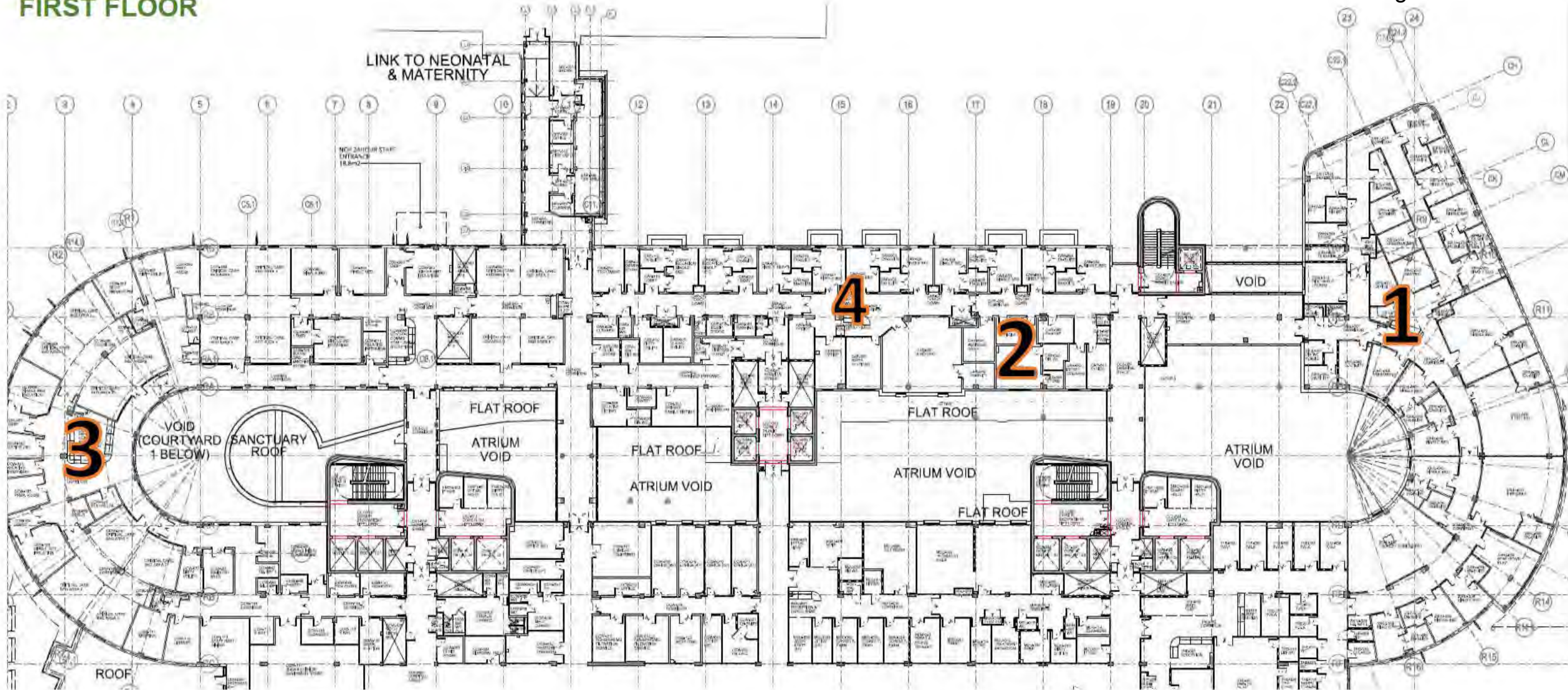


FIRST FLOOR



Medical Day Unit





Numbers refer to photos shown on the following slide

FIRST FLOOR



Ward 1a – staff base (29 Aug 14)



Typical Playroom/dining (26 Aug 15)



Ward 1b – staff base (28 Nov 14)



Medical Day Unit – staff base/reception (29 Aug 14)



Ward 1c – staff base (26 Sept 14)



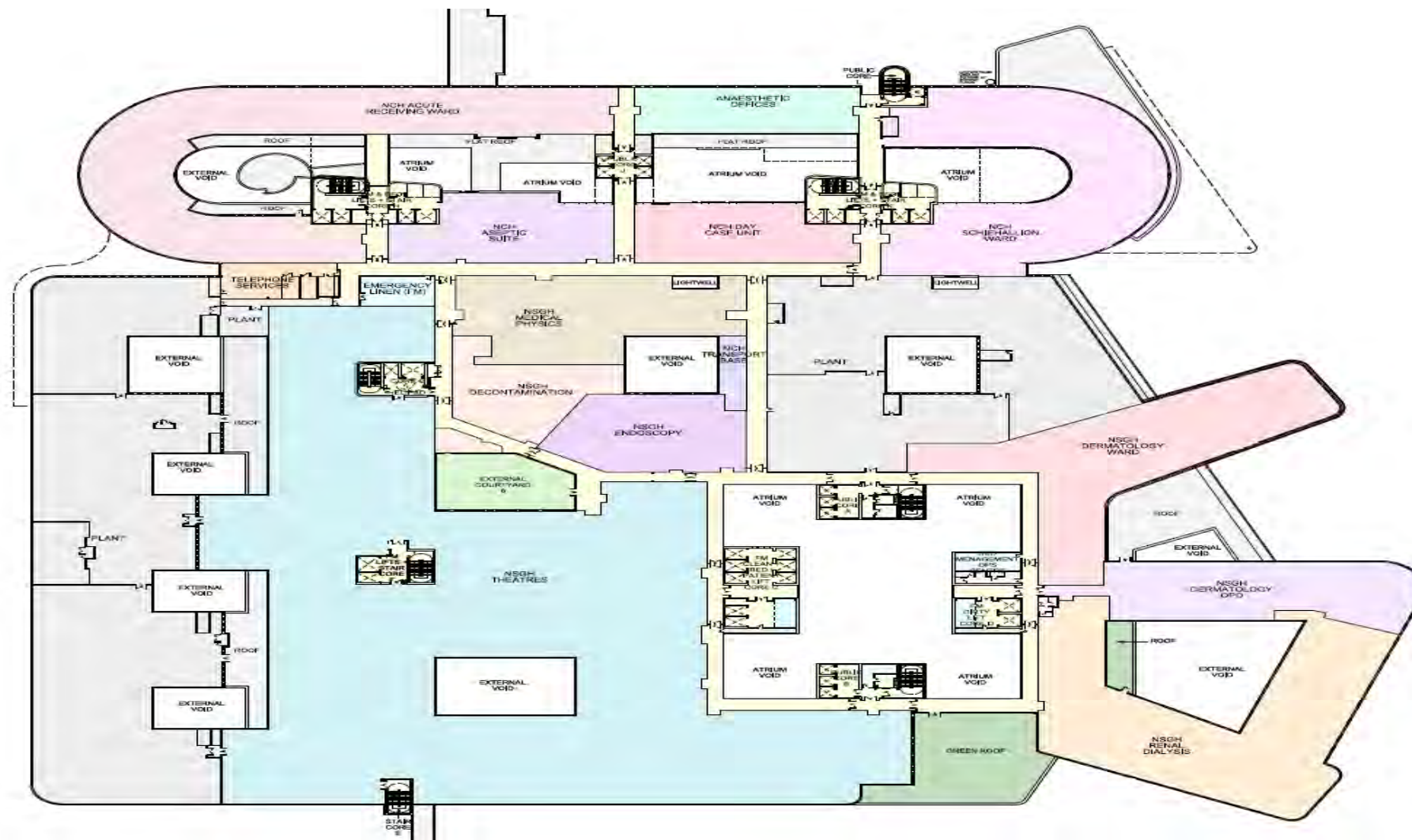
PICU Corridor (26 Sept 14)



Typical Critical Care Bed Areas (26 Sept 14)



SECOND FLOOR ADJACENCY PLAN

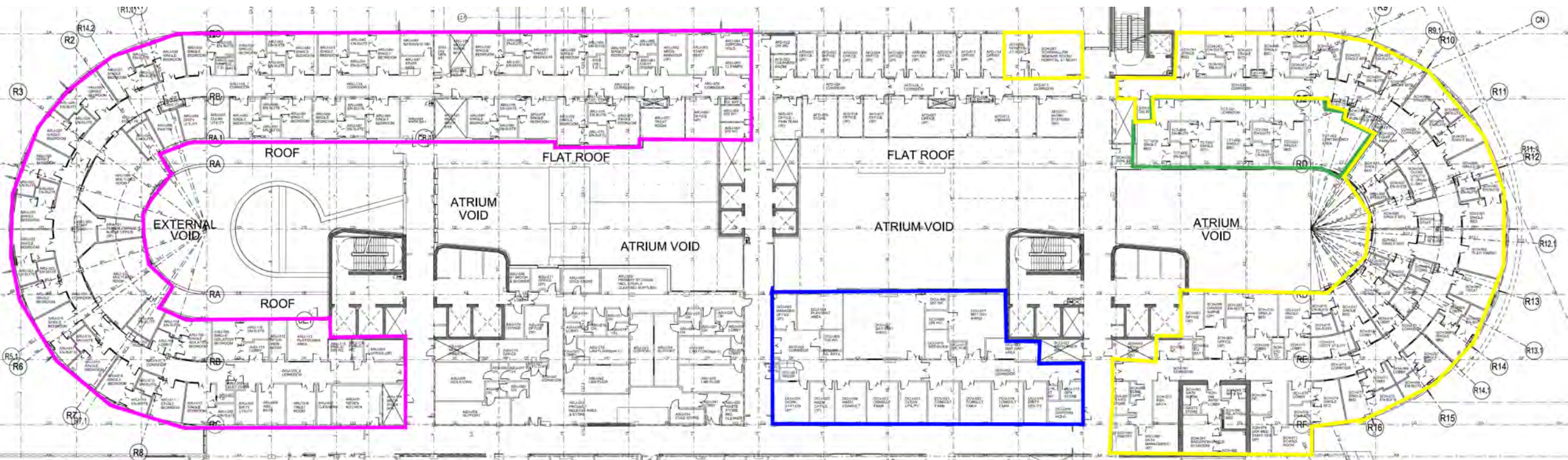


SECOND FLOOR

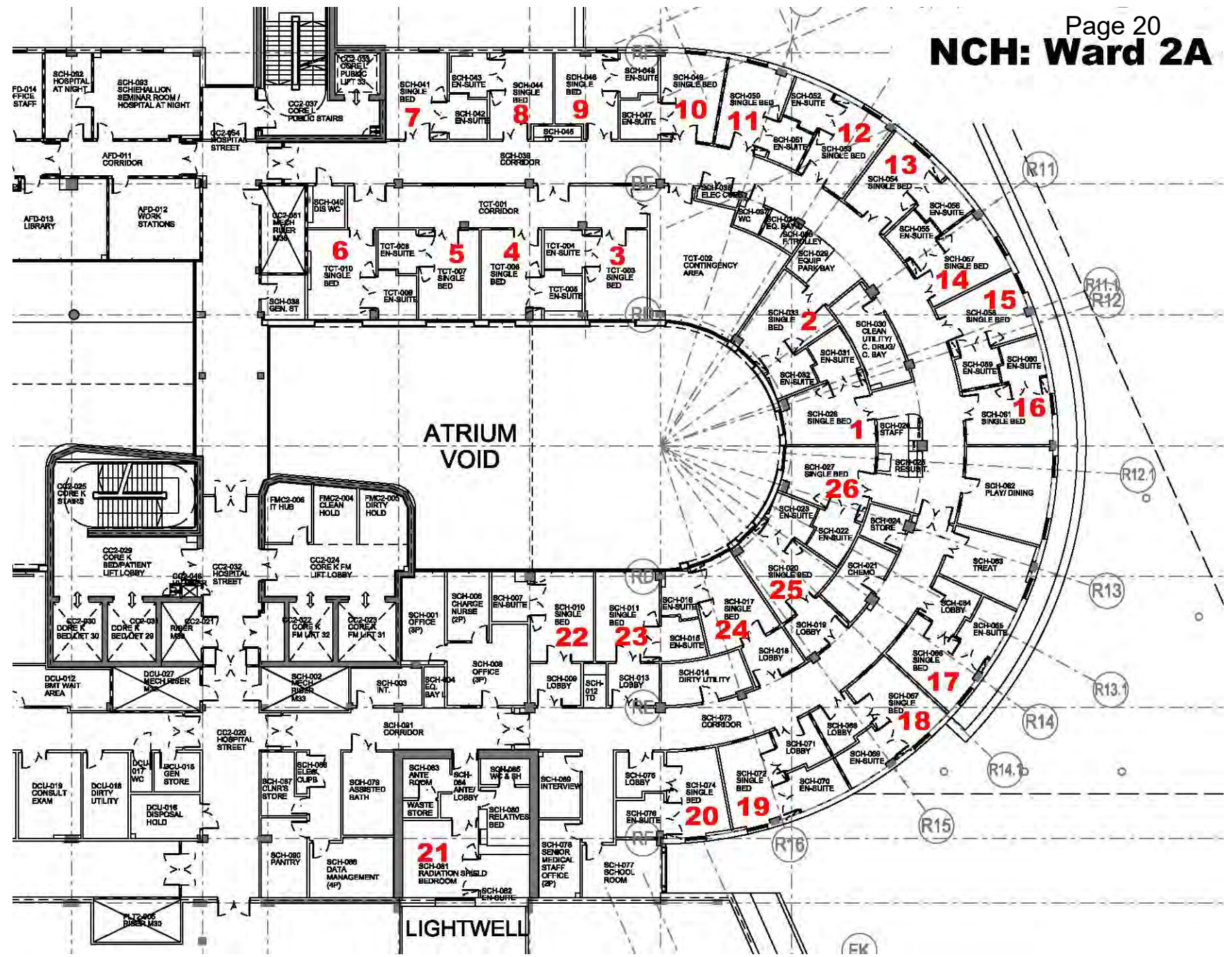
Ward 2c – Acute Receiving Ward

Ward 2a – Teenage Cancer Trust

Ward 2a - Schiehallion ward

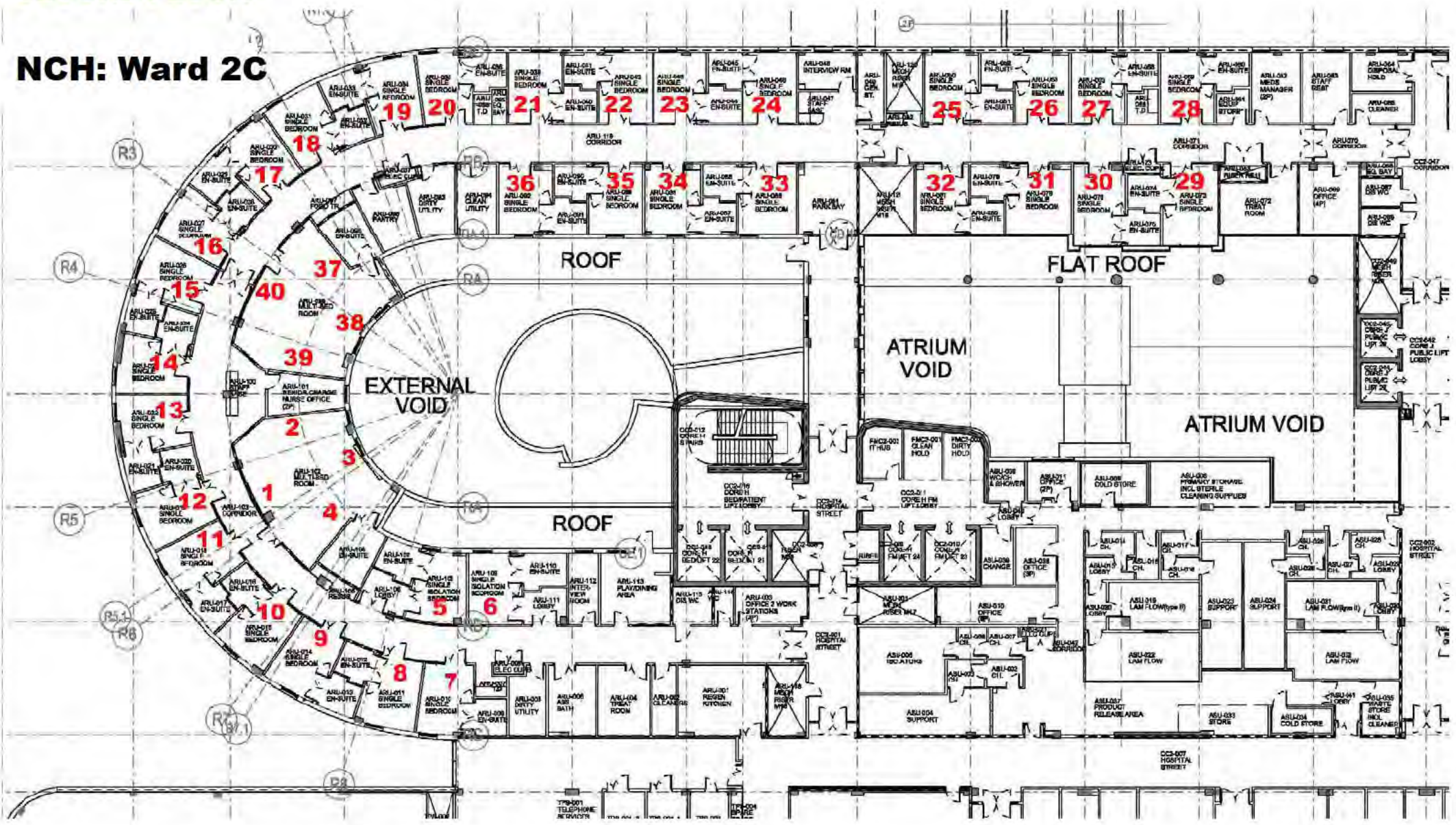


Ward 2b - Daycase Unit

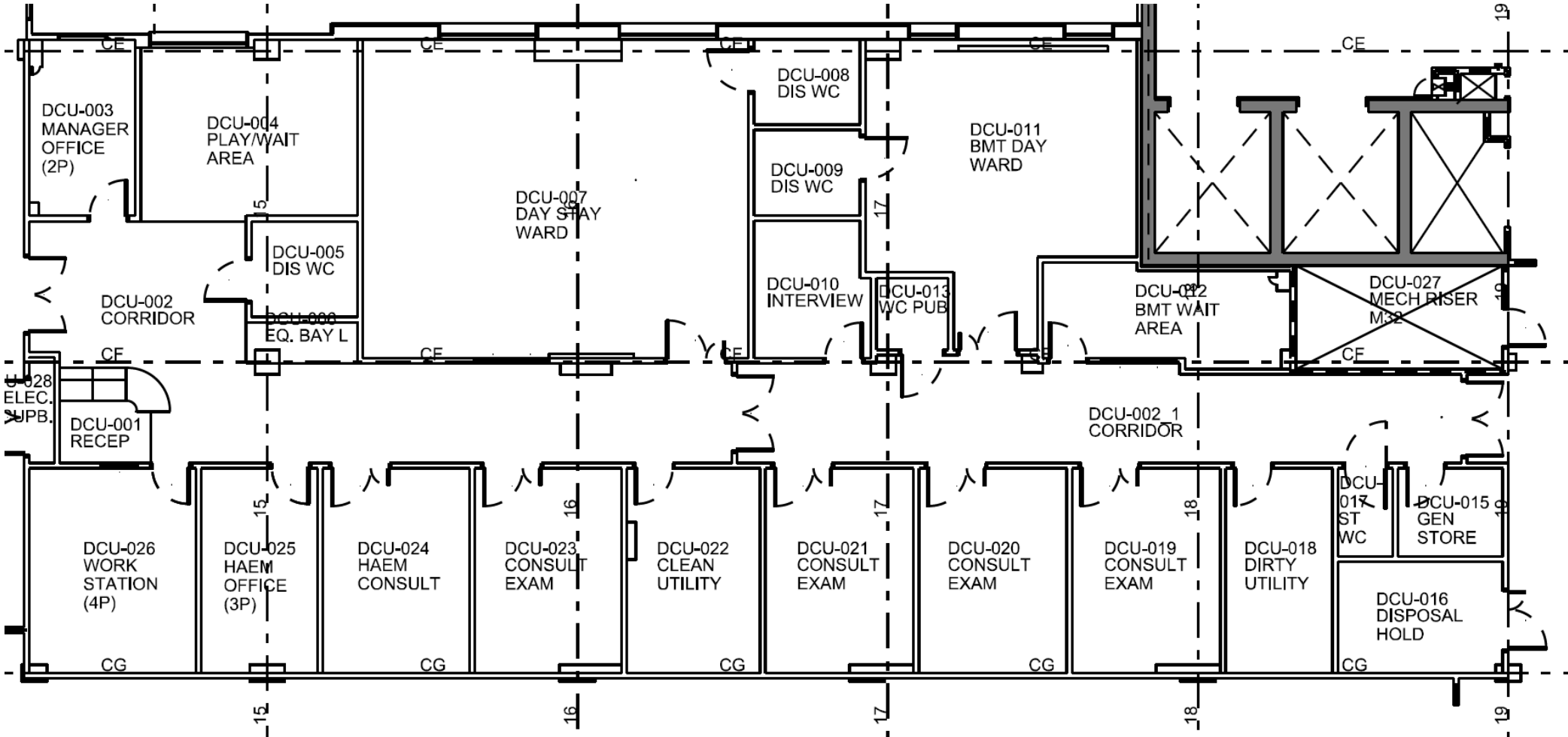


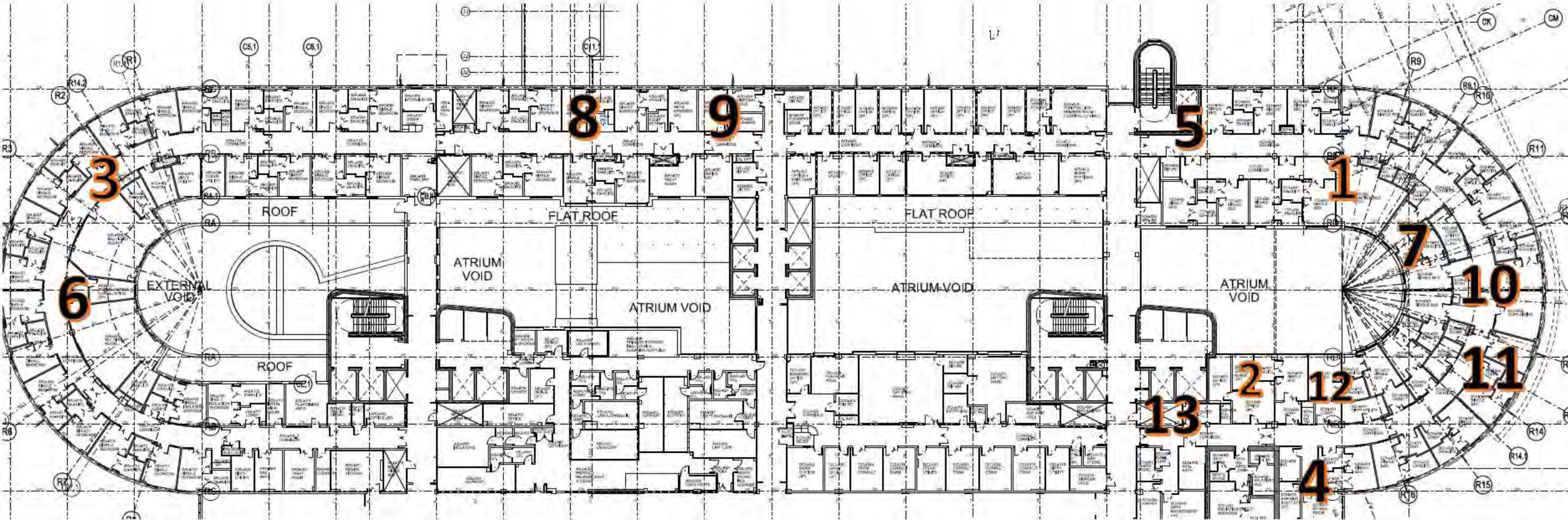
SECOND FLOOR

NCH: Ward 2C



NCH: WARD 2B





Numbers refer to photos shown on the following 2 slides

SECOND FLOOR



Teenage Cancer Trust (TCT) Lounge (26 Aug 15)



Isolation Rooms separated by touch down base (26 Aug 15)



TCT Enhanced Decorated Rooms for Paediatrics (26 Aug 15)



Typical School room (26 Aug 15)



Corridor at TCT – TCT entrance on right (26 Aug 15)



Ward 2b Staff base with windows into the multi-bed rooms (26 Aug 15)



Ward 2b corridor (19 Dec 14)

SECOND FLOOR



Multi-bed space (4 beds in a cruciform layout) which staff base looks into



Typical Ensuite Bedroom (29 Aug 14)



Typical Ward 2b Ensuite Bedroom (29 Aug 14)



Ward 2b touchdown base looking into bedrooms (29 Aug 2014)



Ward 2b Corridor (29 Aug 2014)



Ward 2a Corridor at Schiehallion Staff Base (26 Aug 15)



Ward 2a - Interview Room (26 Aug 15)



Ward 2b Treatment Room (26 Aug 15)

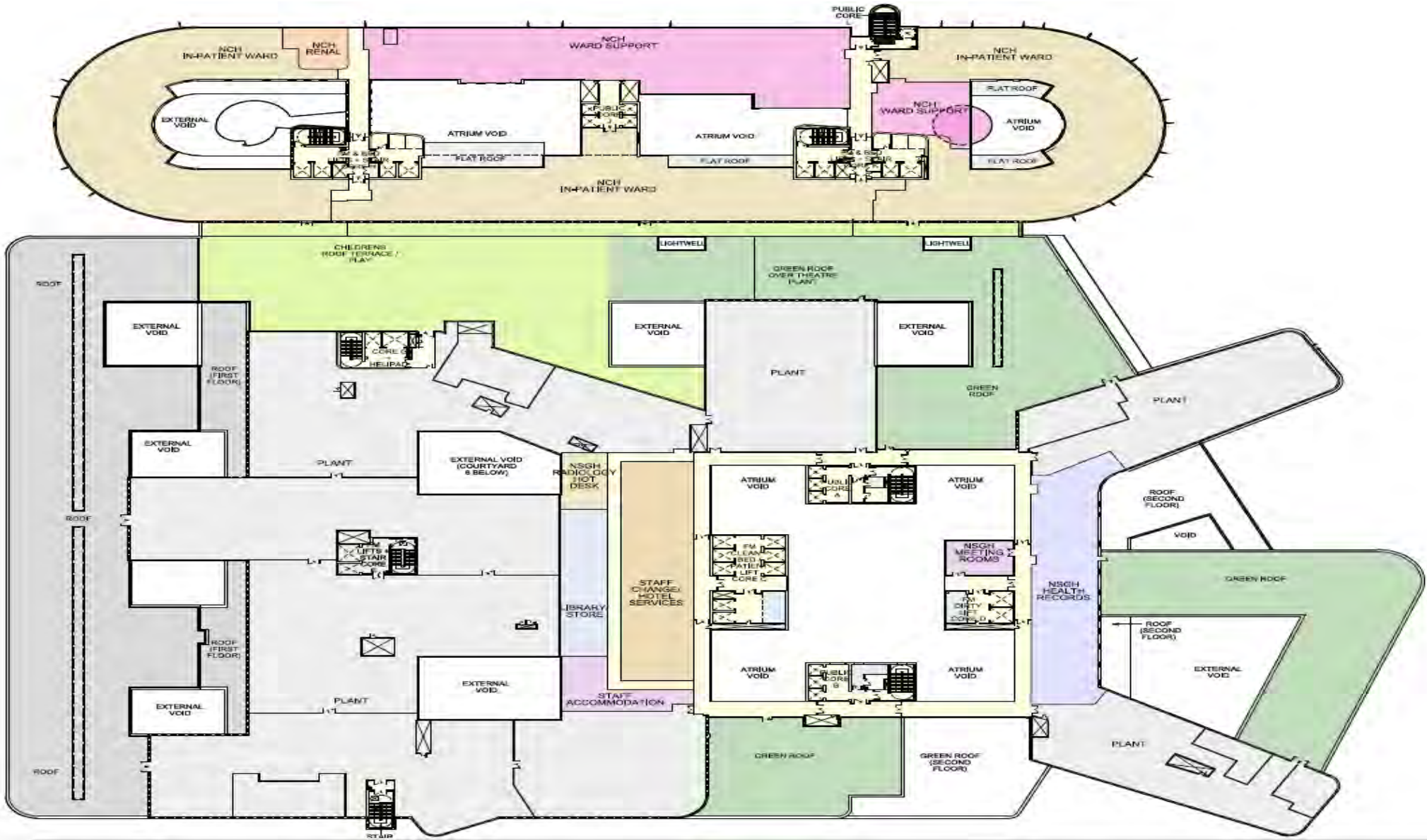


Schiehallion Ensuite Bedroom - enhanced decoration (26 Aug 15)

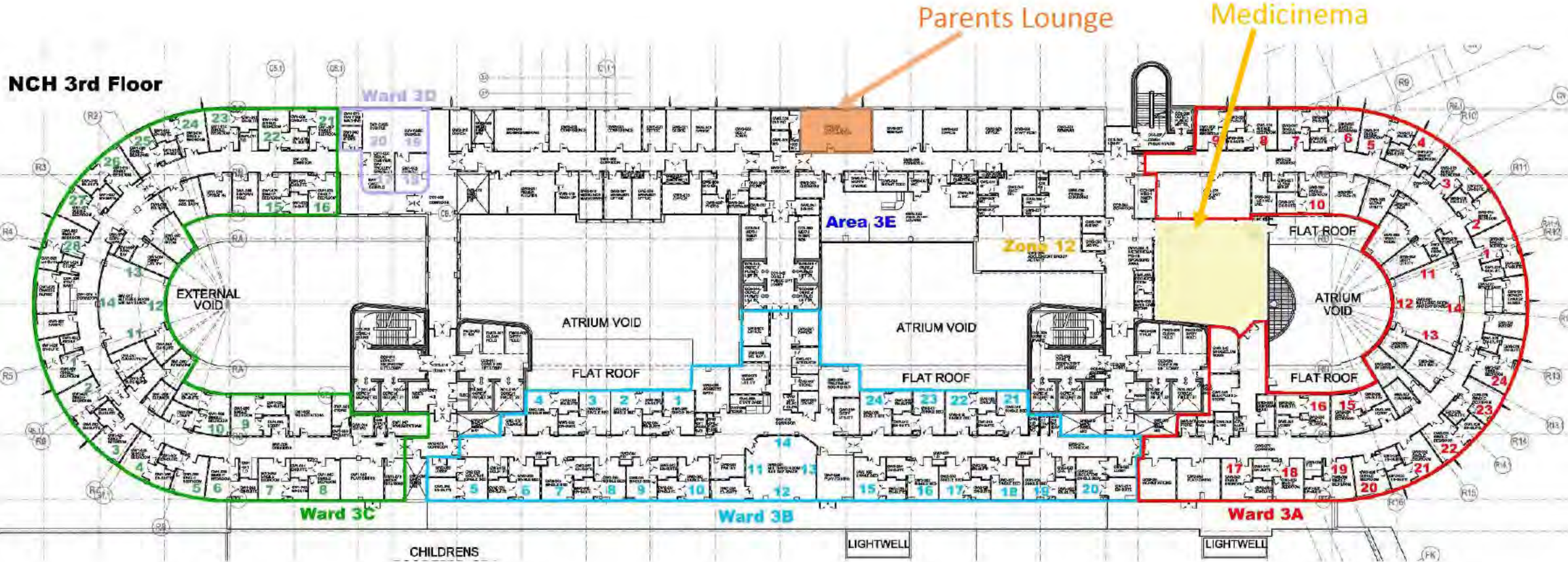


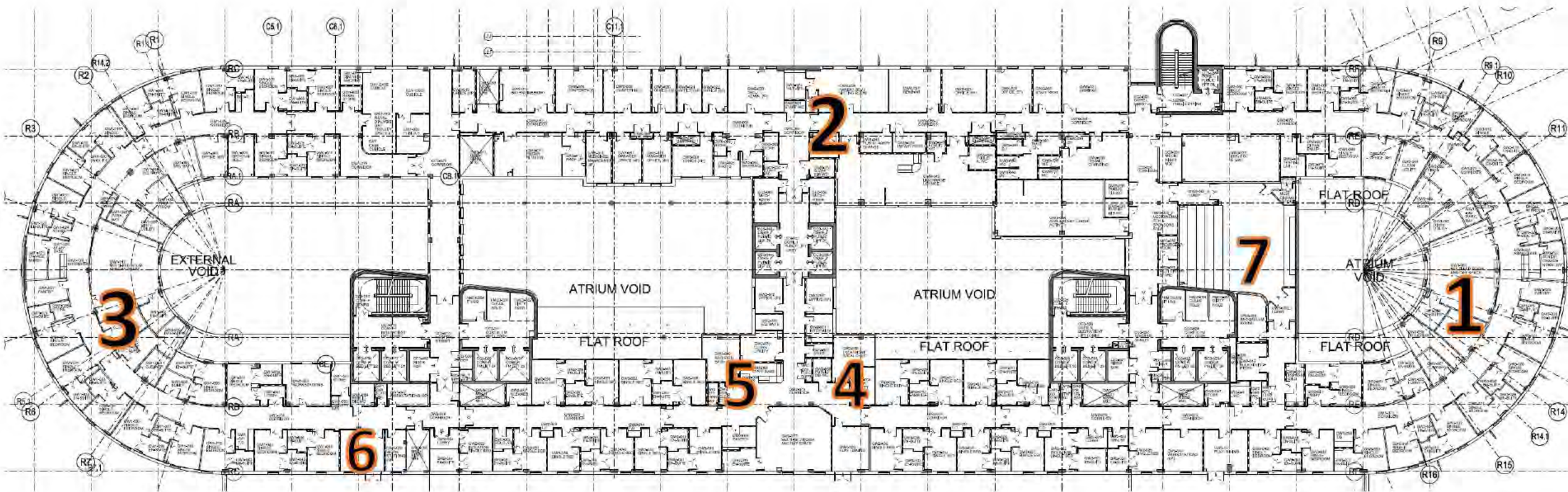
Entrance to Schiehallion Ward (2a) (26 Aug 15)

THIRD FLOOR ADJACENCY PLAN



THIRD FLOOR





Numbers refer to photos shown on the following slide

THIRD FLOOR



Typical Bedroom with pull down bed for parent/carer (26 Aug 15)



Typical Staff Touch Down Base (26 Aug 15)



Parents Beverage/Sitting room (26 Aug 15)



Discharge Lounge – Area 3e (26 Aug 15)



Typical Treatment room (26 Aug 15)



Ward 3B – staff base (19 Dec 14)



Typical play room (26 Aug 15)



Medicinema

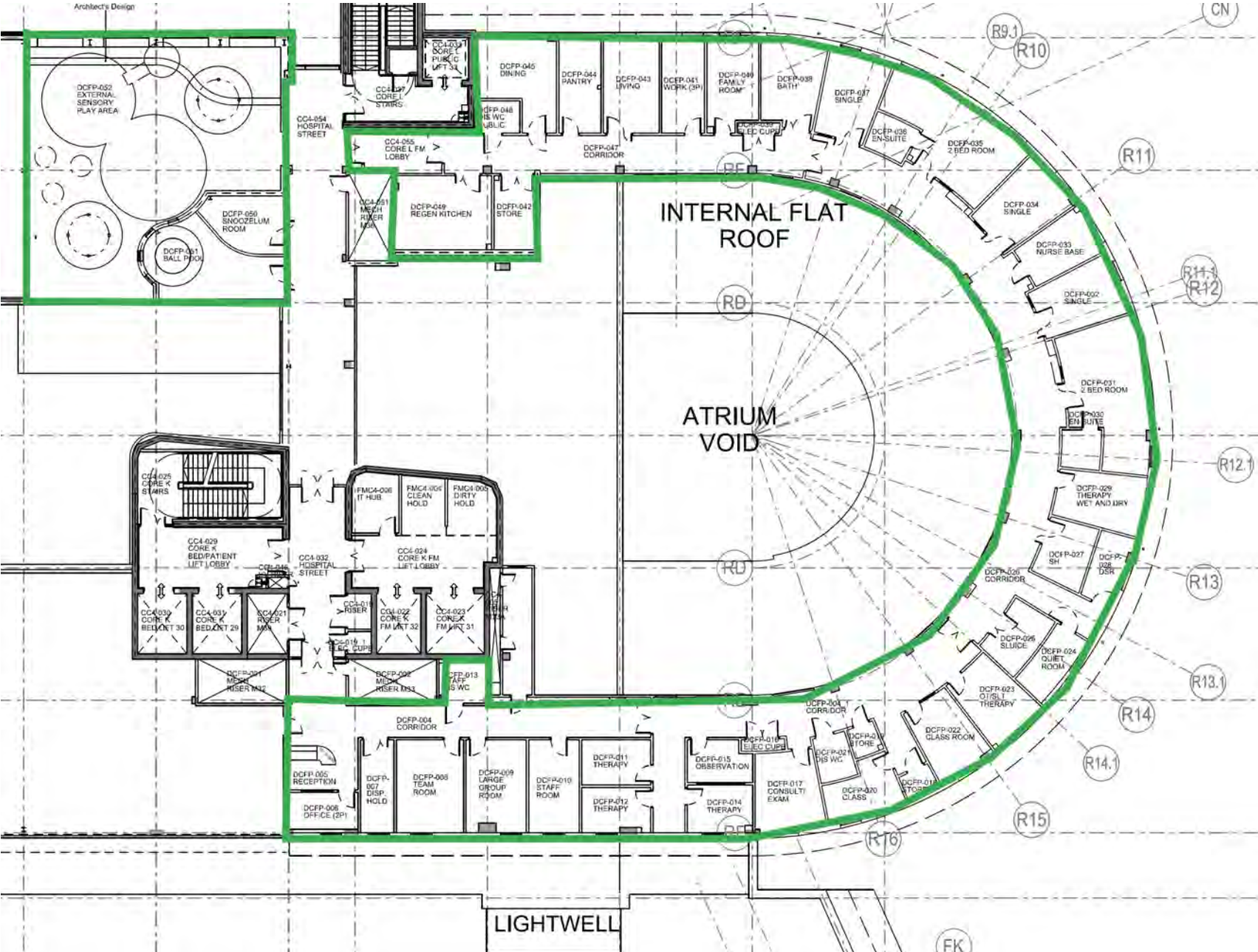


Parent/Carer Lounge (26 Aug 15)

FOURTH FLOOR ADJACENCY PLAN



FOURTH FLOOR – DEPARTMENT OF CHILD AND FAMILY PSYCHIATRY (DCFP)



FOURTH FLOOR



DCFP Corridor (26 Aug 15)



Observation Room (26 Aug 15)



Soft Play Room (26 Aug 15)



DCFP Corridor (26 Aug 15)

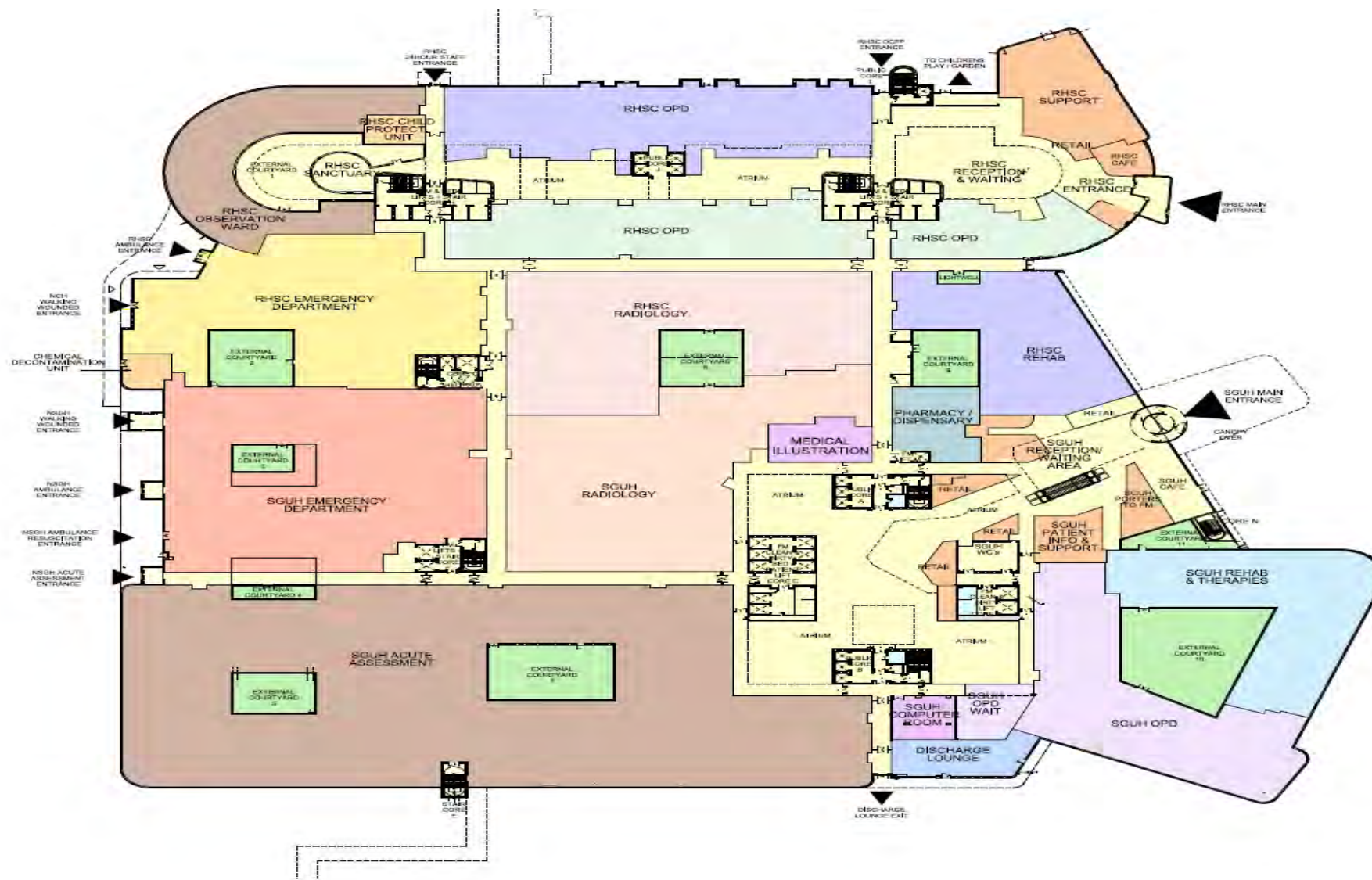


Level 4 Roof Garden (26 Aug 15)

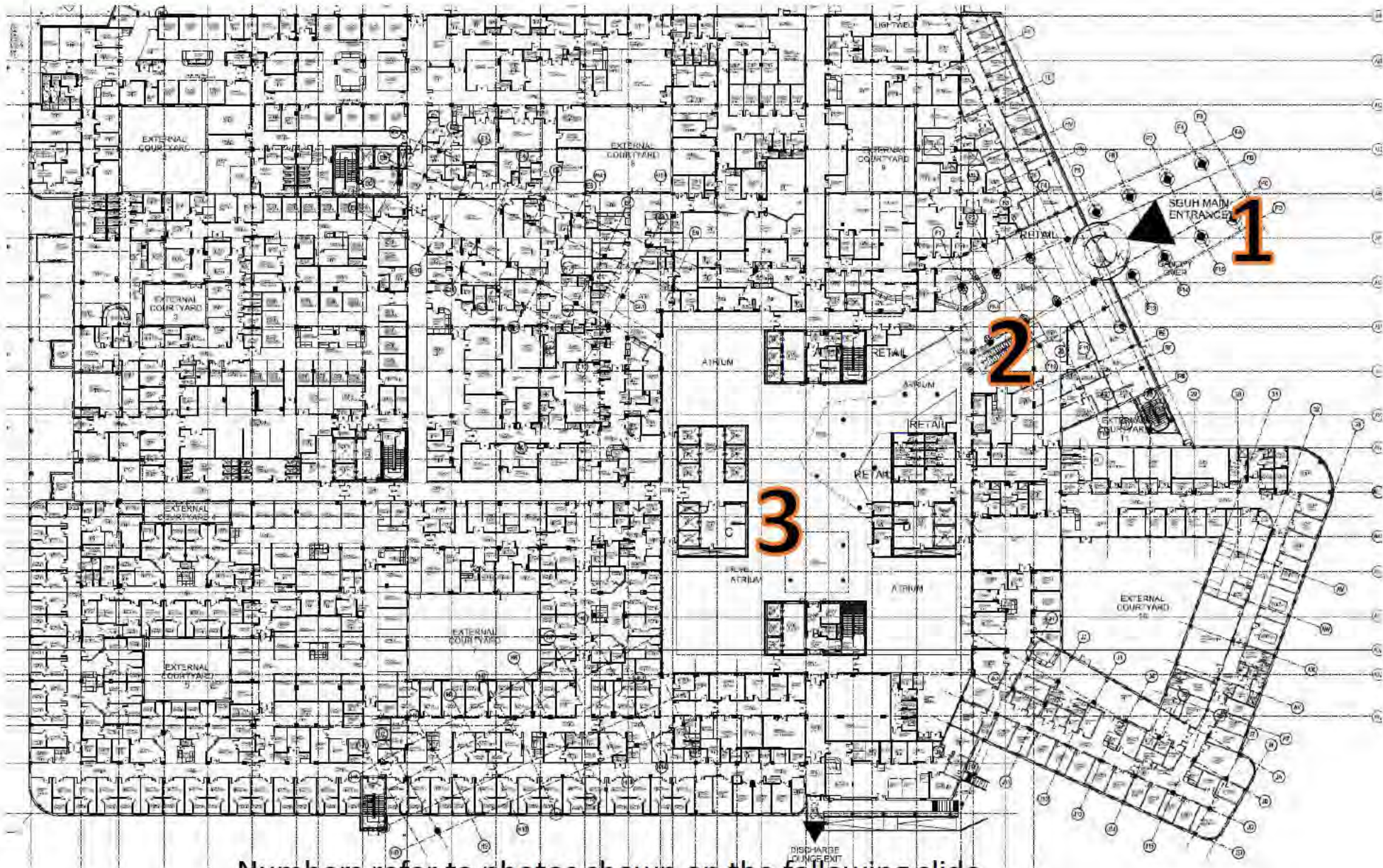
QUEEN ELIZABETH UNIVERSITY HOSPITAL



GROUND FLOOR ADJACENCY PLAN



GROUND FLOOR (EXTRACT)



Numbers refer to photos shown on the following slide

GROUND FLOOR



1
Main Entrance – QEUH (circa Summer 2015)



2
View once in main entrance (circa Summer 2015)



3
Main Entrance Reception Desk (28 April 2015)



3
View of link bridge from Imaging Dept (28 April 2015)



View of main entrance from Café Area (circa Summer 15)



View once past reception desk – shops and café area (circa Summer 2015)



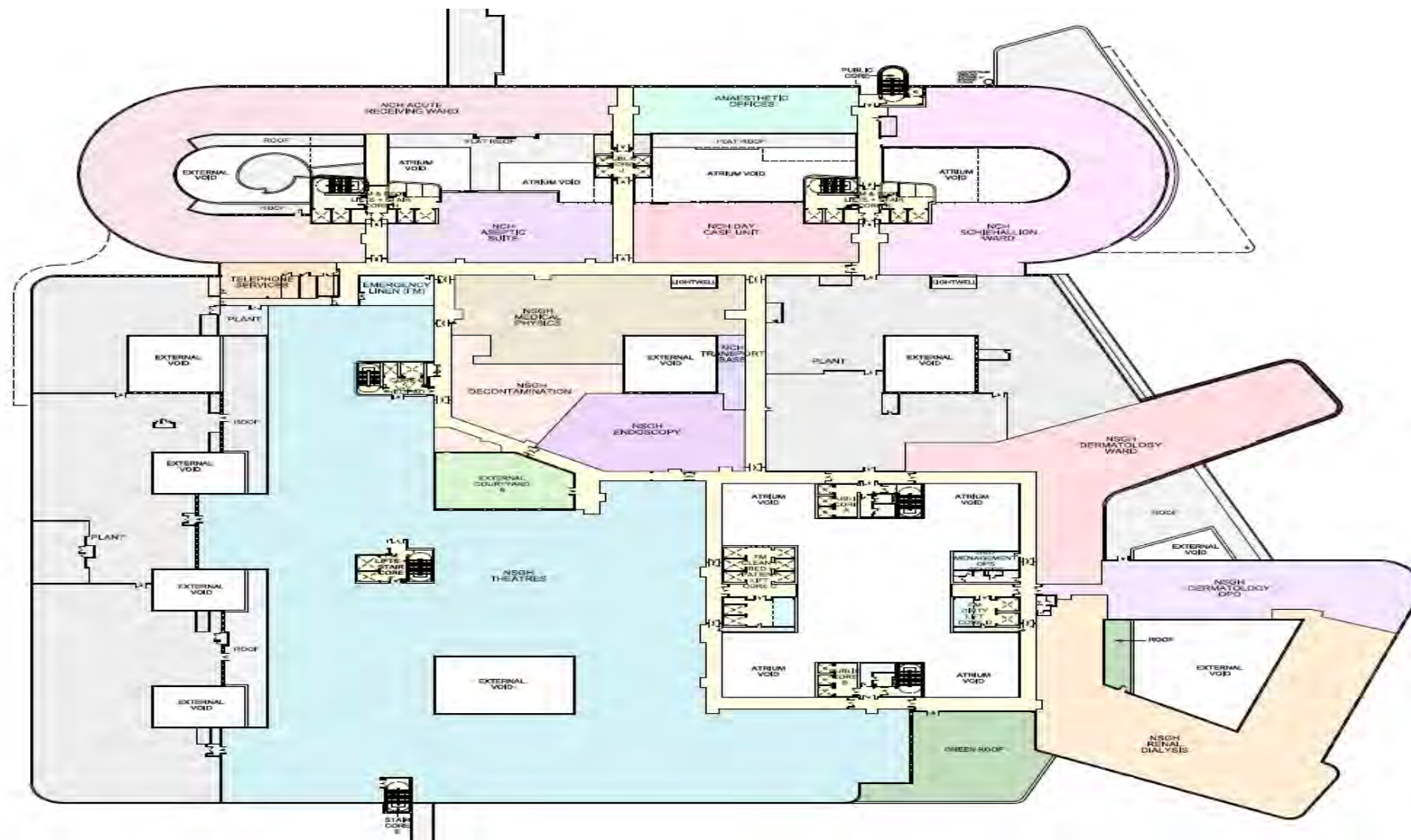
View of Sanctuary with Bute Lift core in background (28 April 2015)



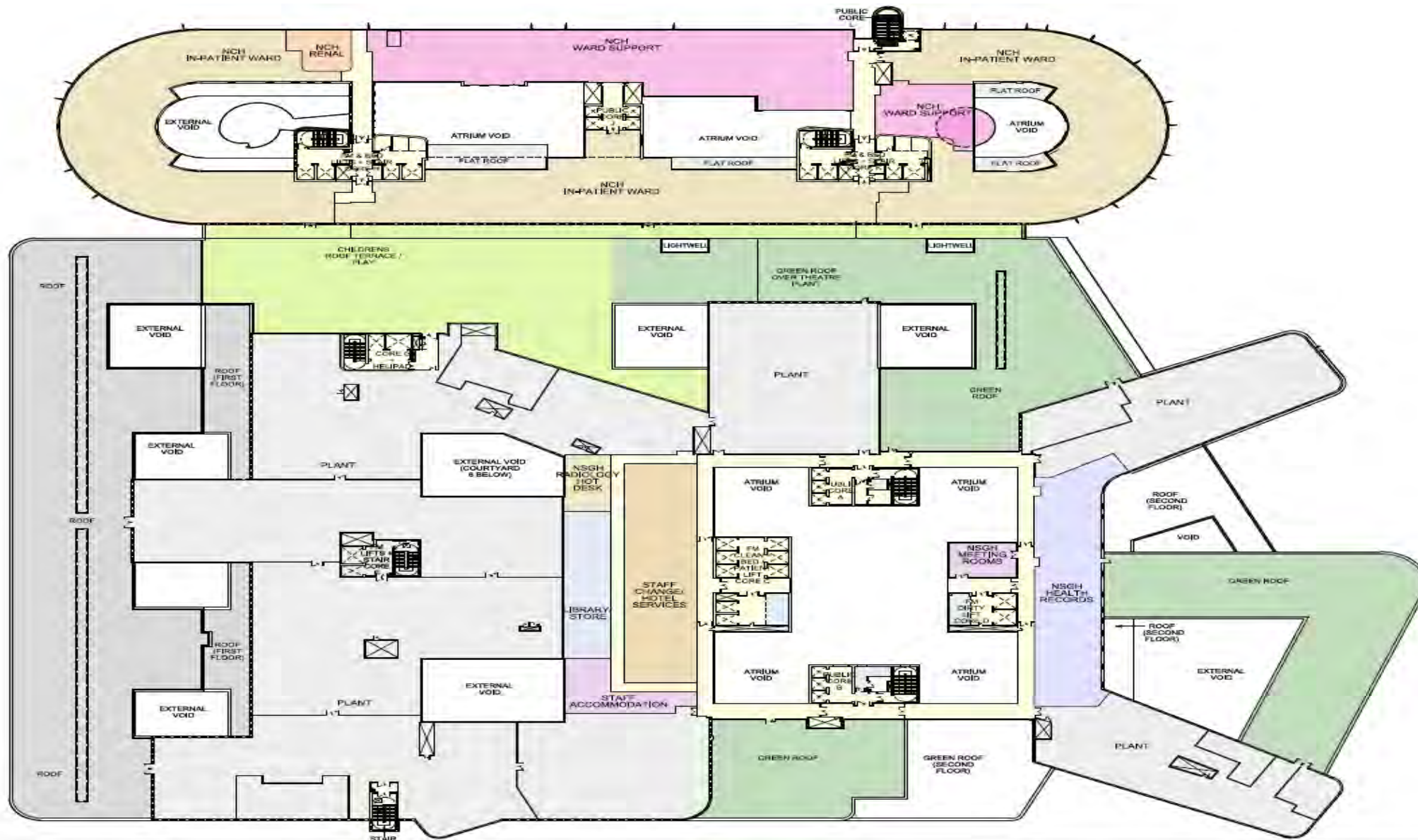
4
View of Arran lift core, café area and self check stands (28 April 2015)



SECOND FLOOR ADJACENCY PLAN



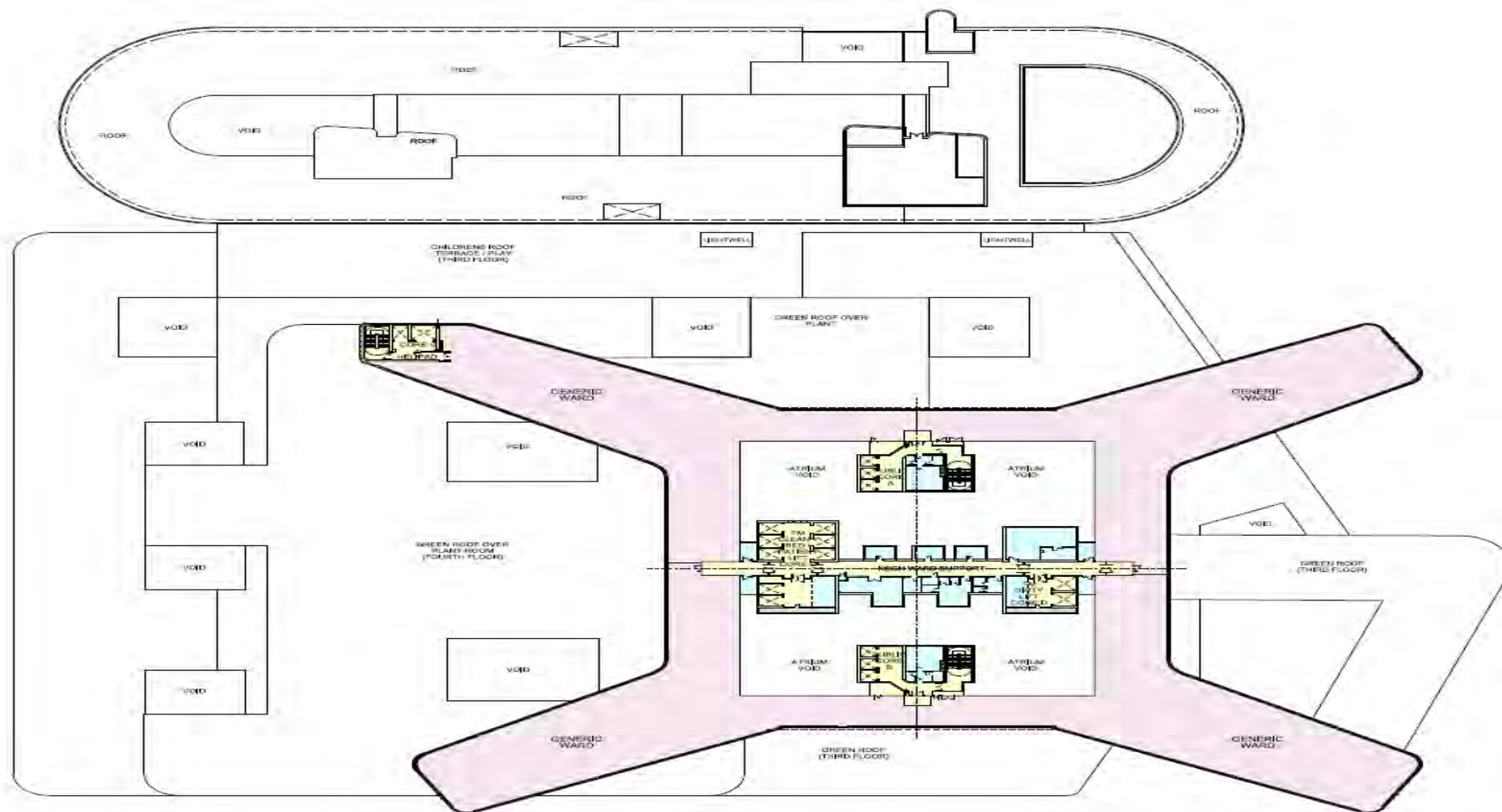
THIRD FLOOR ADJACENCY PLAN



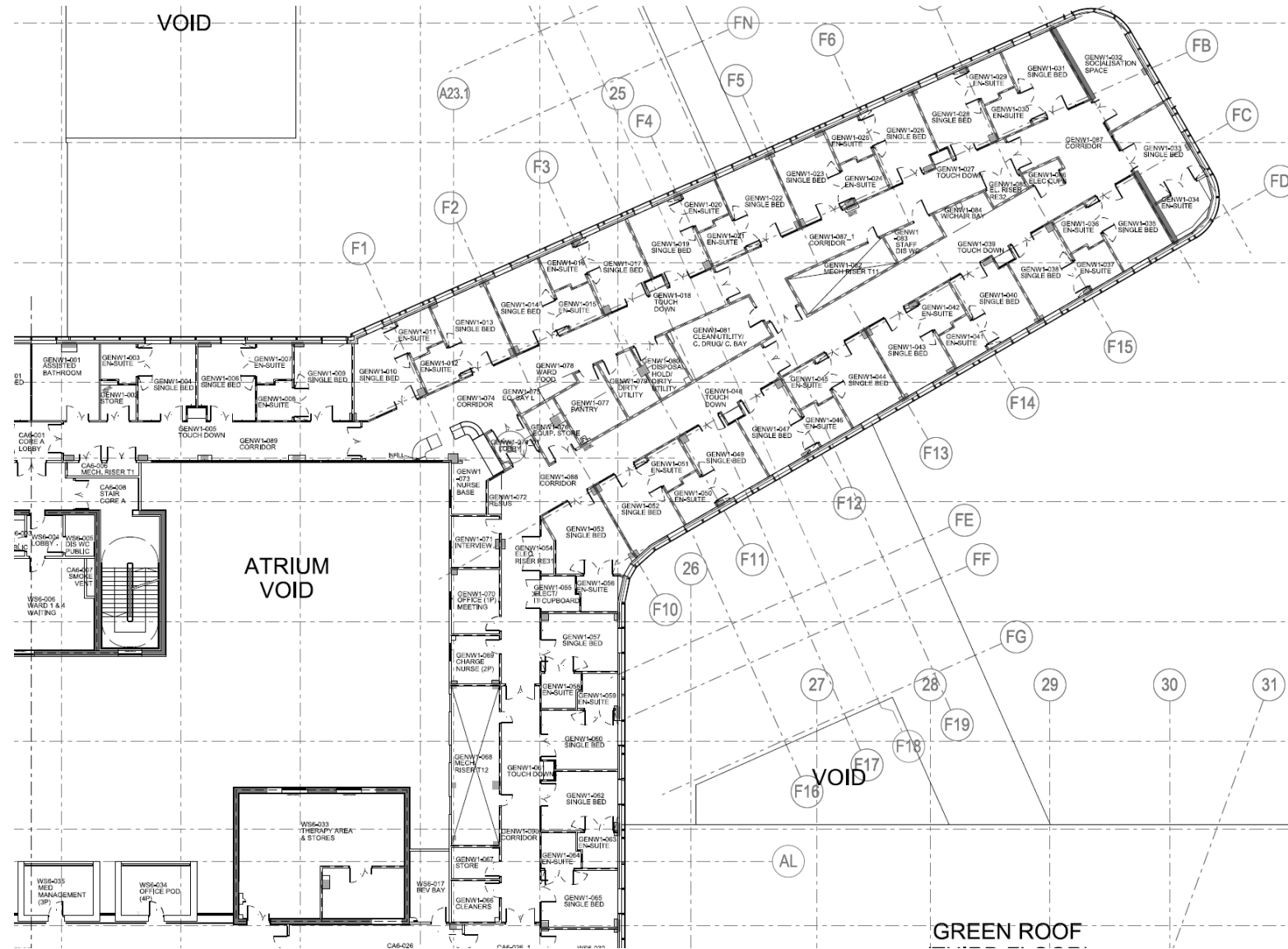
FOURTH FLOOR ADJACENCY PLAN

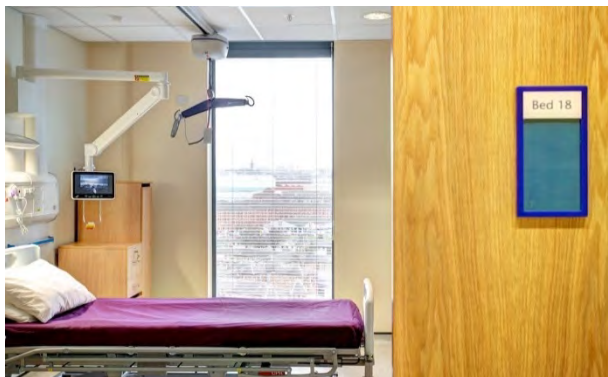


SIXTH FLOOR ADJACENCY PLAN



Ward 6a – Generic Ward

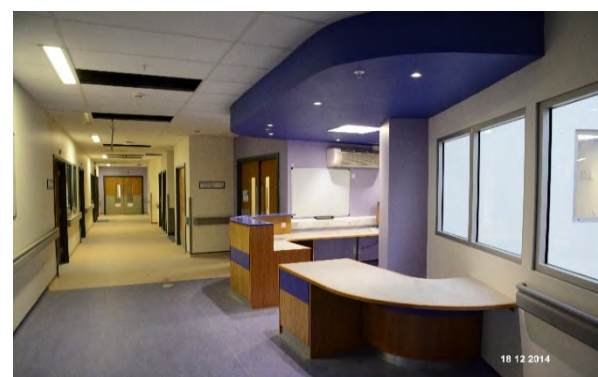




Typical View into an Adult Ensuite Bedroom (28 April 15)



Ward 10a – Main Staff Ward Base (18 Dec 14)



Ward 6a – Main Staff Ward Base (18 Dec 14)



Level 6 Lifts (18 Dec 14)



Typical view towards corner of ward leg (18 Dec 14)



View from Socialisation room along ward legs (28 April 15)



Typical Adult Ward Socialisation Space (28 April 15)



View into a typical Adult Ensuite (Nov 14)



10th floor – Large single bedroom with en-suite (18 Dec 14)



Ward 10a – Exit towards Core D Lifts and Link Bridge to core (18 Dec 14)



Wards 10th floor – Typical access from one side of ward leg to the other side (18 Dec 14)



Staff Touchdown base (28 April 15)

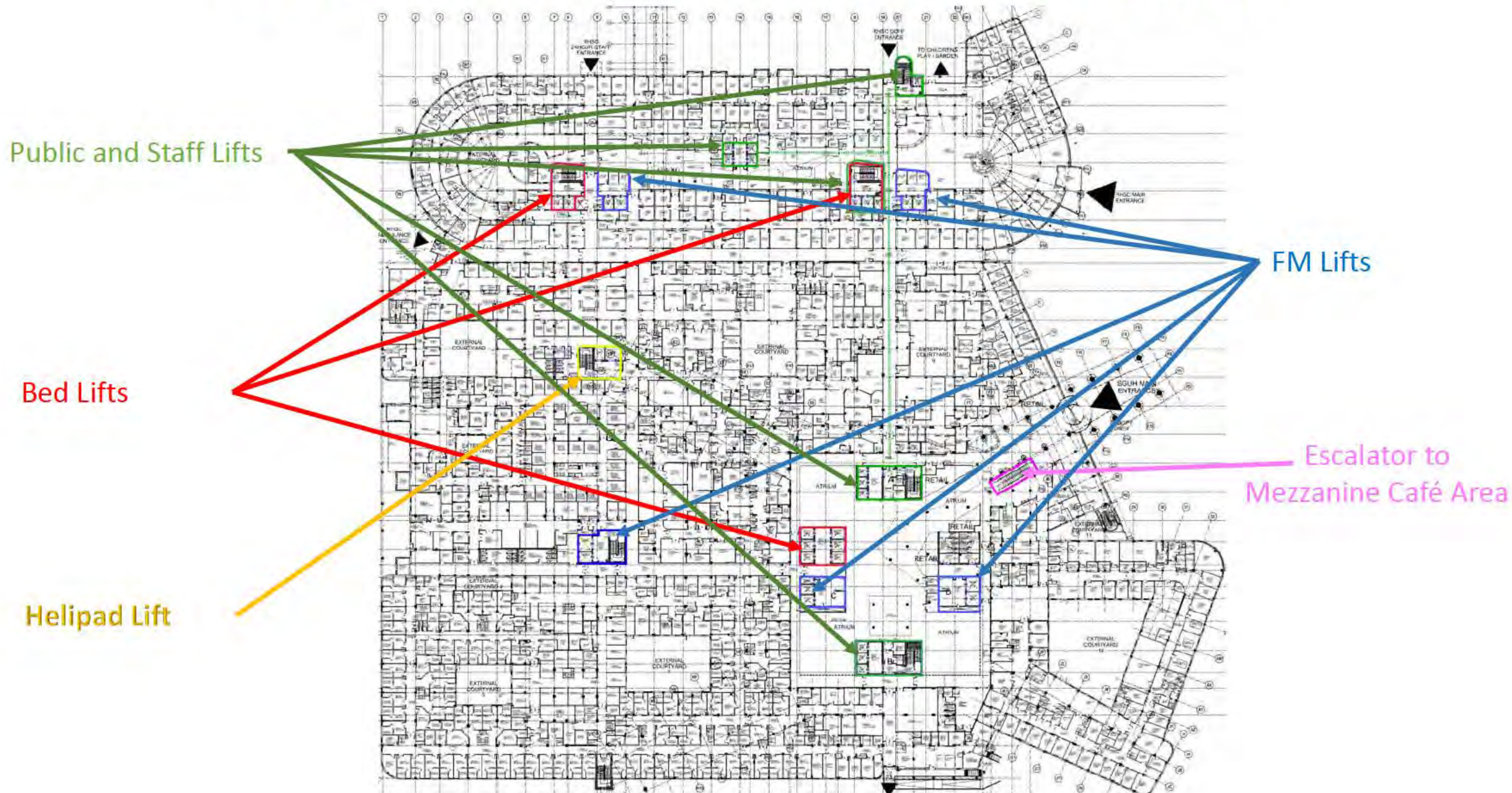


View of ensuite bedroom out to corridor
(28 April 15)



View of along staff/FM core link bridge
(28 April 15)

LOCATION OF LIFT AND STAIR CORES



Hospitals physically joined by link bridges to Neurosciences (from QEUH) and Maternity (from RHC)



Link to Neurosciences (19 Dec 14)



Link to Maternity (pre Summer 2015)



SCOTTISH HOSPITALS INQUIRY
Hearing Commencing
20 September 2021
**Bundle 2 - Material Illustrating Layout of Queen Elizabeth University Hospital
and Royal Hospital for Children, Glasgow**